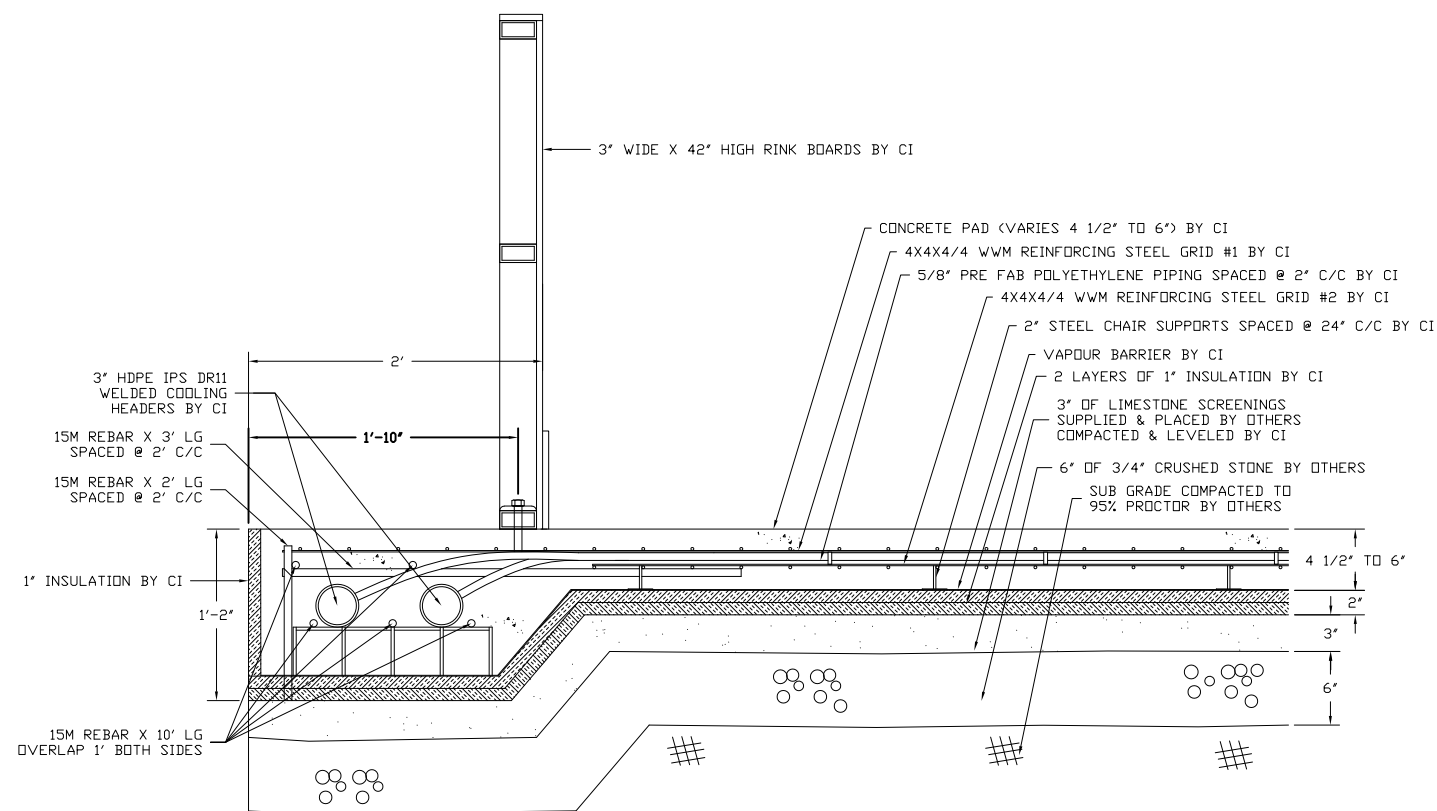
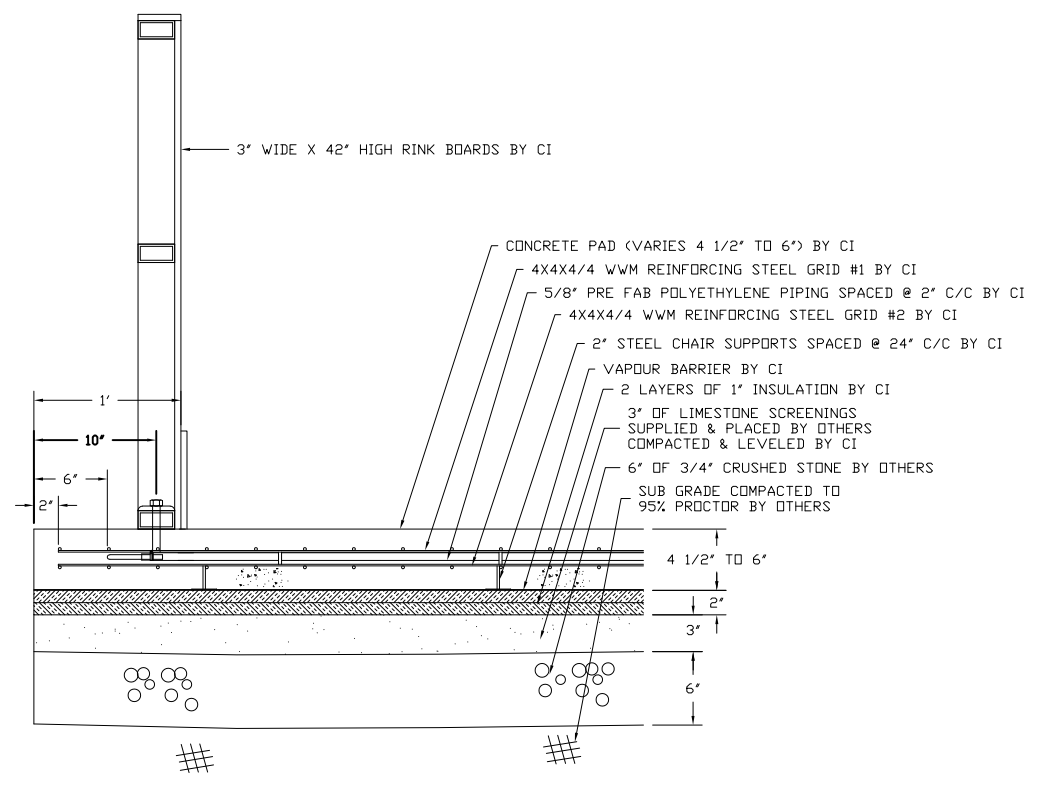


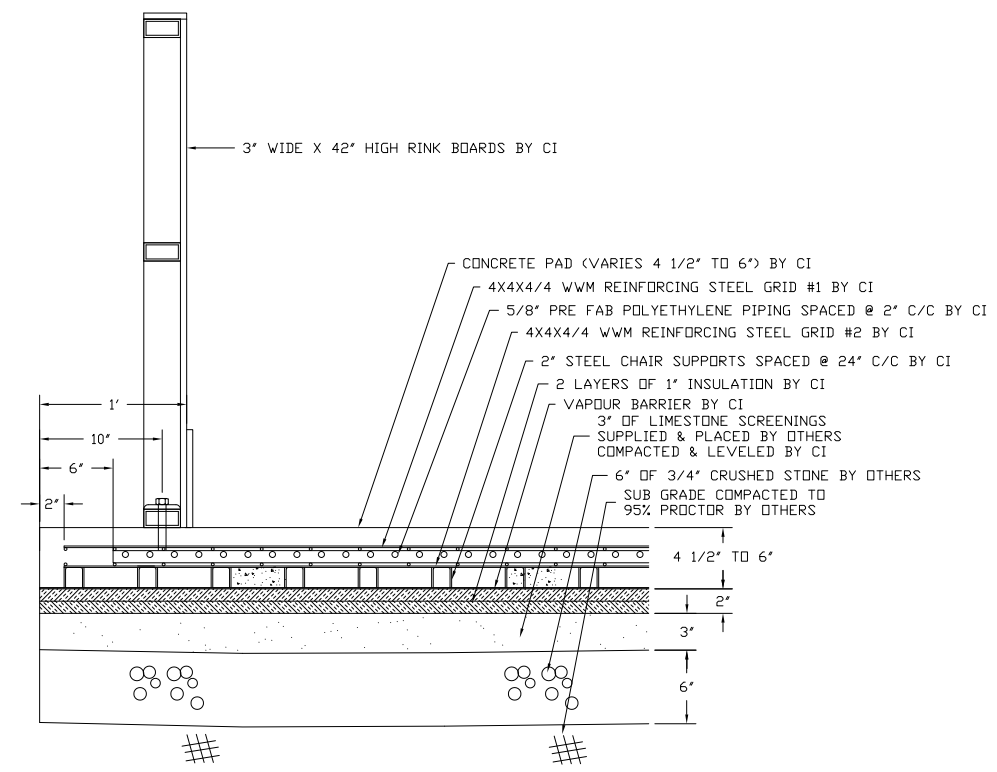
No.	REVISIONS



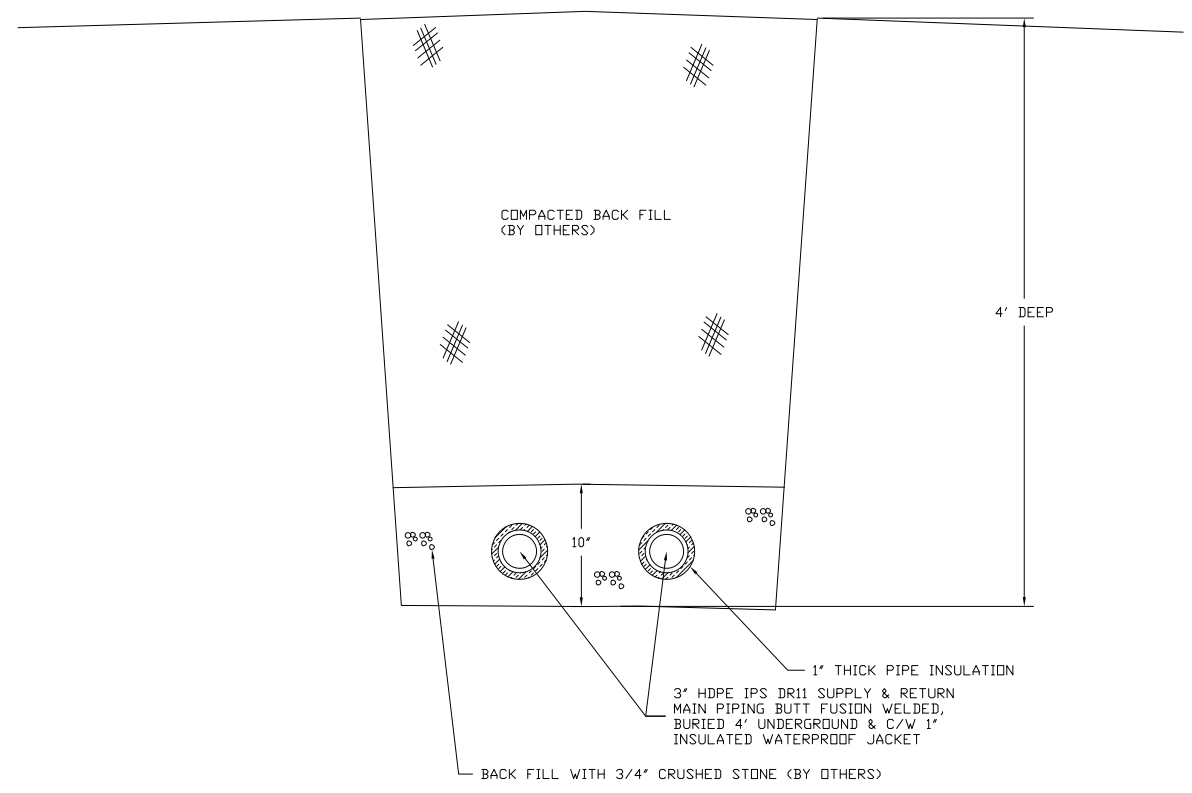
A TYPICAL HEADER SECTION
B1



B TYPICAL END SECTION
B1



C TYPICAL SIDE SECTION
B1



D MAIN PIPING TRENCH SECTION
B1

CUSTOM ICE
Rink Design Build

PROJECT ADDRESS

TITLE
RINK SECTIONS

PROJECT
LEE RESIDENCE

CHECKED BY

DATE DEC 1/23

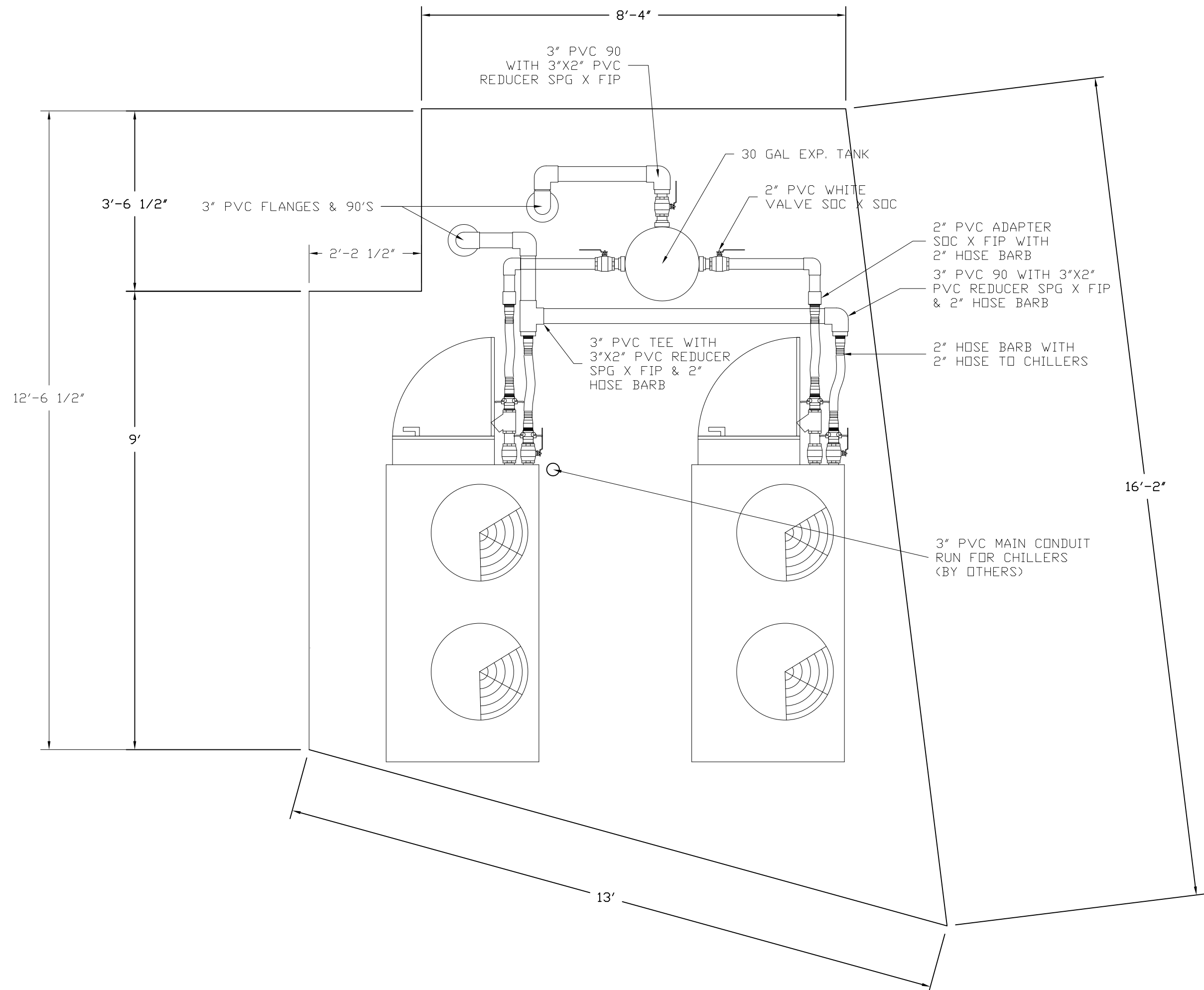
SCALE

DRAWN BY

JOB

DWG B2

SHEET
OF



No.	REVISIONS

CUSTOM ICE
Rink Design Build

PROJECT ADDRESS

TITLE
CHILLER PAD PIPING LAYOUT

PROJECT
LEE RESIDENCE

CHECKED BY

DATE SEPT 14/22

SCALE

DRAWN BY

JOB

DWG B4

SHEET OF

Custom Ice RinkMateKit™ Chiller General Specifications

Dimensions: Overall width 36", overall length 80", overall height 48"

Shipping Weight: 1400 lbs

Operating Weight: 1475 lbs

Unit Electrical Rating: 87 amps @ 230 vac, 1 phase (other voltage ratings available)

Capacity: 10 tons refrigeration @ 50 F ambient and 15 F leaving glycol temp/20 F returning, 50 usgpm flow

Compressors: Quantity = 3
Copeland 5 hp scroll, 15 hp total

Condenser: Side mounted horizontal air cooled coil
Dual propeller fans each ½ hp @ 1500 cfm
Pressure operated with fan cycling

Refrigerant: R404a, 20 lbs charge
Design evaporating pressure: 32 psi (suction)
Design condensing pressure: 185 psi (discharge)

Evaporator: Alfa Laval Braized Plate Heat Exchanger,
50 usgpm flow with 10 psi pressure drop,
2" brass ball valves with camlock connections

HP Receiver: 20 lb vertical

Suction Accumulator: 5 lb vertical

Controls: UL/ULC Equivalent rated & approved NEMA 4 panel
Hi and Low pressure safeties
Compressor overload protection
Glycol flow electrical interlock via pressure switch (20/5 psi)
Single stage ice temperature controller

Frame: Welded steel base

Finish: Galvanized steel panel construction