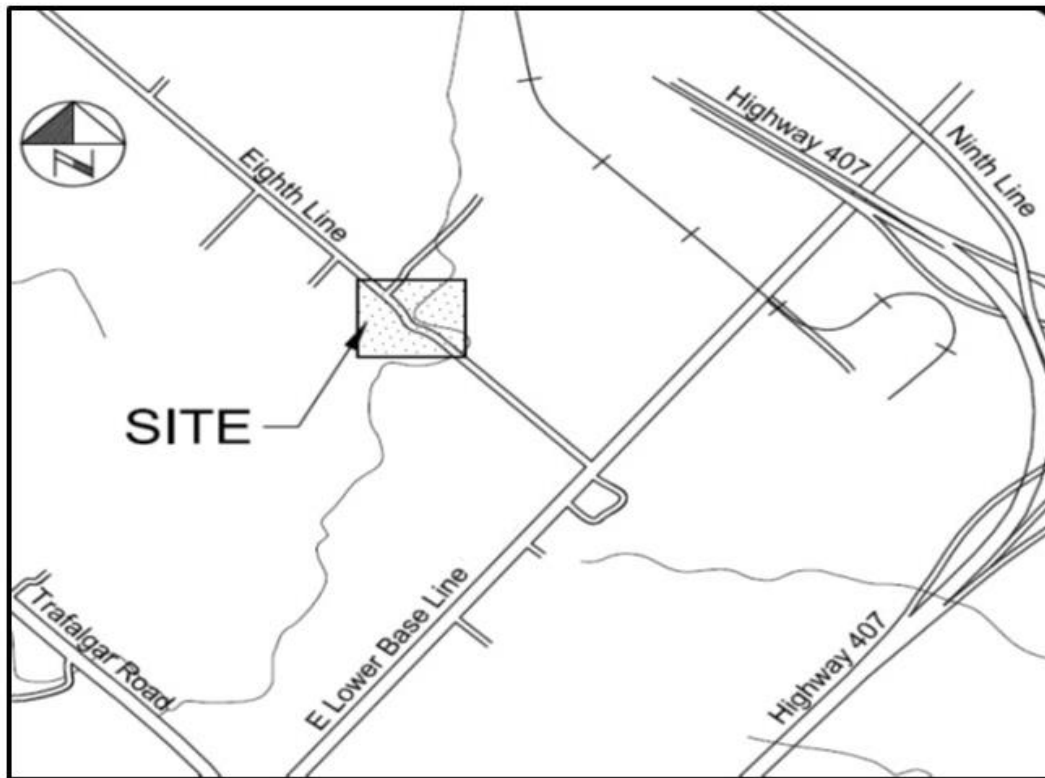


Notice of Construction

Eighth Line Slope Stabilization

The Town of Milton's contractor (R&M Construction) will be rehabilitating the creek (tributary to Sixteen Mile Creek) and slope along the east side of Eighth Line, approximately 550m north of East Lower Base Line. The scope of work includes earth and channel work, slope stabilization, tree protection, plantings and minor shoulder work. There may be a lane closure during working hours, however, one lane of traffic will be maintained at all times, and two lanes of traffic at all times outside of working hours. Significant impacts to traffic on Eighth Line during this work are not expected.

Monday, September 25, 2017 - Friday, October 6, 2017



The work schedule is subject to change due to weather and construction scheduling. For updates, visit www.milton.ca/roads and the Town's Facebook and Twitter feeds.

For more information, please contact:

Diana Jiona, P. Eng.
Coordinator, Infrastructure
Engineering Services, Town of Milton
150 Mary Street, Milton ON L9T 6Z5
Tel: 905-878-7252 x2513

[Diana Jiona](#)