

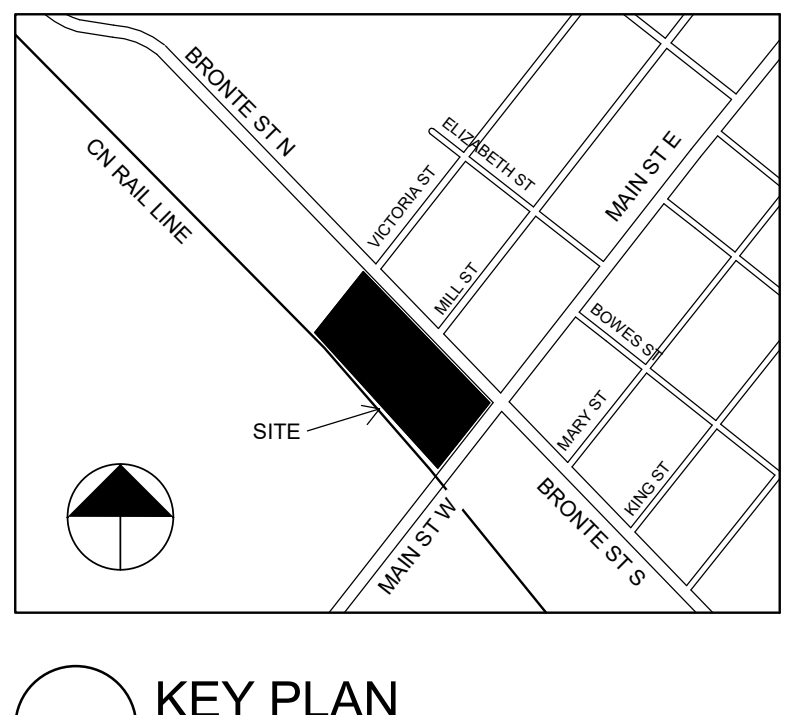
SUITE SUMMARY - RESIDENTIAL SELLABLE AREA														
Floors	Bachelor	UNITS				Building A	Building B	TOTAL UNITS	Building A Sellable Area	Building B Sellable Area	Total Sellable Area			
		1B	1B+D	2B	2B+D									
1st FLOOR	0	5	0	0	0	0	5	0 m²	2,830 m²	2,830 m²				
2nd FLOOR	0	23	13	1	1	0	15	22	37	8,854 m²	13,795 m²	23,649 m²		
3rd FLOOR	0	23	17	5	1	0	22	24	46	15,221 m²	15,059 m²	30,280 m²		
4th FLOOR	0	23	17	5	1	0	22	24	46	15,006 m²	15,183 m²	30,189 m²		
5th FLOOR	0	18	21	6	1	0	22	24	46	15,006 m²	15,183 m²	30,189 m²		
6th FLOOR	0	15	13	10	2	0	19	21	40	13,510 m²	15,065 m²	28,575 m²		
7th FLOOR	0	7	8	7	0	2	12	12	24	8,184 m²	8,750 m²	16,934 m²		
8th FLOOR	0	12	8	8	0	0	14	14	28	8,888 m²	9,000 m²	17,888 m²		
9th FLOOR	0	12	8	8	0	0	14	14	28	8,888 m²	9,000 m²	17,888 m²		
10th FLOOR	0	12	8	8	0	0	14	14	28	8,888 m²	9,000 m²	17,888 m²		
11th FLOOR	0	12	8	8	0	0	14	14	28	8,888 m²	9,000 m²	17,888 m²		
12th FLOOR	0	12	8	8	0	0	14	14	28	8,888 m²	9,000 m²	17,888 m²		
13th FLOOR	0	12	8	8	0	0	14	14	28	8,888 m²	9,000 m²	17,888 m²		
14th FLOOR	0	12	8	8	0	0	14	14	28	8,888 m²	9,000 m²	17,888 m²		
15th FLOOR	0	12	8	8	0	0	14	14	28	8,888 m²	9,000 m²	17,888 m²		
16th FLOOR	0	6	3	7	1	1	8	10	18	6,818 m²	6,776 m²	13,594 m²		
17th FLOOR	0	4	3	3	1	5	8	8	16	6,818 m²	6,889 m²	13,706 m²		
18th FLOOR	0	0	0	1	1	4	6	0	6	6,818 m²	0 m²	6,818 m²		
TOTAL	0	219	159	109	9	12	246	262	508	168,335 m²	171,532 m²	339,867 m²		

TOTAL BUILDING AREAS			
Floors	Building A Area	Building B Area	Total Area
UNDERGROUND LEVEL 2	4,135 m²	6,036 m²	10,171 m²
UNDERGROUND LEVEL 1	1,841 m²	1,579 m²	3,420 m²
1st FLOOR	1,960 m²	1,660 m²	3,619 m²
2nd FLOOR	1,779 m²	1,783 m²	3,563 m²
3rd FLOOR	1,759 m²	1,728 m²	3,487 m²
4th FLOOR	1,759 m²	1,728 m²	3,487 m²
5th FLOOR	1,759 m²	1,728 m²	3,487 m²
6th FLOOR	1,620 m²	1,717 m²	3,337 m²
7th FLOOR	1,010 m²	1,008 m²	2,018 m²
8th FLOOR	973 m²	969 m²	1,942 m²
9th FLOOR	973 m²	969 m²	1,942 m²
10th FLOOR	973 m²	969 m²	1,942 m²
11th FLOOR	973 m²	969 m²	1,942 m²
12th FLOOR	973 m²	969 m²	1,942 m²
13th FLOOR	973 m²	969 m²	1,942 m²
14th FLOOR	973 m²	969 m²	1,942 m²
15th FLOOR	973 m²	969 m²	1,942 m²
16th FLOOR	771 m²	763 m²	1,533 m²
17th FLOOR	771 m²	763 m²	1,533 m²
18th FLOOR	771 m²	0 m²	771 m²
TOTAL	30,091 m²	32,552 m²	62,644 m²

SELLABLE AREA RESIDENTIAL			
Floors	Building A Sellable Area	Building B Sellable Area	
1st FLOOR	0 m²	263 m²	263 m²
2nd FLOOR	916 m²	1,282 m²	2,197 m²
3rd FLOOR	1,414 m²	1,399 m²	2,813 m²
4th FLOOR	1,394 m²	1,411 m²	2,805 m²
5th FLOOR	1,394 m²	1,411 m²	2,805 m²
6th FLOOR	1,255 m²	1,400 m²	2,655 m²
7th FLOOR	760 m²	813 m²	1,573 m²
8th FLOOR	826 m²	836 m²	1,662 m²
9th FLOOR	826 m²	836 m²	1,662 m²
10th FLOOR	826 m²	836 m²	1,662 m²
11th FLOOR	826 m²	836 m²	1,662 m²
12th FLOOR	826 m²	836 m²	1,662 m²
13th FLOOR	826 m²	836 m²	1,662 m²
14th FLOOR	826 m²	836 m²	1,662 m²
15th FLOOR	826 m²	836 m²	1,662 m²
16th FLOOR	633 m²	630 m²	1,263 m²
17th FLOOR	633 m²	640 m²	1,273 m²
18th FLOOR	633 m²	0 m²	633 m²
TOTAL	15,639 m²	15,936 m²	31,575 m²

STATISTICS		SQ. M.
Site Area		13,415.93 m²
Lot Coverage	26.85%	3,602.04 m²
Landscape Open Space	32.95%	4,420.84 m²
Building A Height	57.20m to T/O Roof Parapet	
Building B Height	53.50m to T/O Roof Parapet	
Total GFA		62,643.60 m²
Total GFA Above Grade		42,301.36 m²
Total FSI		3.153
Total Residential Units		508
Unit per HA		378.65

PARKING STATISTICS	
Floors	Spaces
1st FLOOR	99
UNDERGROUND LEVEL 1	258
UNDERGROUND LEVEL 2	280
TOTAL PARKING PROVIDED	637



LOCKER SCHEDULE			
Floors	Building A	Building B	Total
UNDERGROUND LEVEL 2	0	28	28
UNDERGROUND LEVEL 1	0	7	7
1st FLOOR	0	37	37
2nd FLOOR	23	47	70
3rd FLOOR	44	47	91
4th FLOOR	44	29	73
5th FLOOR	44	29	73
6th FLOOR	44	29	73
7th FLOOR	15	0	15
8th FLOOR	4	0	4
9th FLOOR	4	0	4
10th FLOOR	4	0	4
11th FLOOR	4	0	4
12th FLOOR	4	0	4
13th FLOOR	4	0	4
14th FLOOR	4	0	4
15th FLOOR	4	0	4
16th FLOOR	4	0	4
17th FLOOR	4	0	4
18th FLOOR	4	0	4
TOTAL	258	253	511

SELLABLE AREA COMMERCIAL			
Floors	Building A Commercial	Building B Commercial	
1st FLOOR	1,062 m²	0 m²	1,062 m²

SELLABLE AREA OFFICE			
Floors	Building A Office	Building B Office	
1st FLOOR	83 m²	0 m²	83 m²
2nd FLOOR	771 m²	0 m²	771 m²
TOTAL	853 m²	0 m²	853 m²

PARKING REQUIRED	
Floors	Spaces
508 Units x 1.0 =	508 Residential Spaces
508 Units x 0.25 =	127.0 Visitor Spaces
1062 S.M. x 20 =	53 Commercial Spaces
853 S.M. x 17 =	50 Office Spaces
TOTAL	635 Spaces Required with Shared Visitor Office/Commercial

TENANT PARKING PROVIDED	
Floors	Spaces
UNDERGROUND LEVEL 1	228
UNDERGROUND LEVEL 2	280
TOTAL TENANT SPACES PROVIDED	508

LONG TERM BICYCLE PARKING PROVIDED			
Floors	Building A	Building B	Total
UNDERGROUND LEVEL 2	137	0	137
UNDERGROUND LEVEL 1	129	0	129
1st FLOOR	42	122	164
TOTAL	308	122	430

CONTRACTOR MUST CHECK AND VERIFY ALL DIMENSIONS AND JOB CONDITIONS BEFORE PROCEEDING WITH WORK.  
ALL DRAWINGS MAY BE SUBJECT TO CHANGE DUE TO COMMENTS FROM MUNICIPAL DEPARTMENTS AND OTHER AGENCIES WITH AUTHORITY.  
ALL DRAWINGS AND SPECIFICATIONS ARE THE PROPERTY OF THE ARCHITECTS AND MUST BE RETURNED AT THE COMPLETION OF THE WORK.  
THE CONTRACTOR WORKING FROM DRAWINGS NOT SPECIFICALLY MARKED FOR CONSTRUCTION MUST ASSUME FULL RESPONSIBILITY AND BEAR COSTS FOR ANY CORRECTIONS OR DAMAGES RESULTING FROM HIS OR HER WORK.

DRAWING SETS ISSUED			
No.	DATE (DD.MM.YY)	BY	
1	25.10.2019	TE	
2	16.12.2019	TB	
3	21.07.2020	TB	

REVISIONS TO DRAWING			
No.	DATE (DD.MM.YY)	BY	

BUILDING PERMIT NUMBER:  
NOT FOR CONSTRUCTION WITHOUT PERMIT

**KNYMH**  
ARCHITECTURE • SOLUTIONS

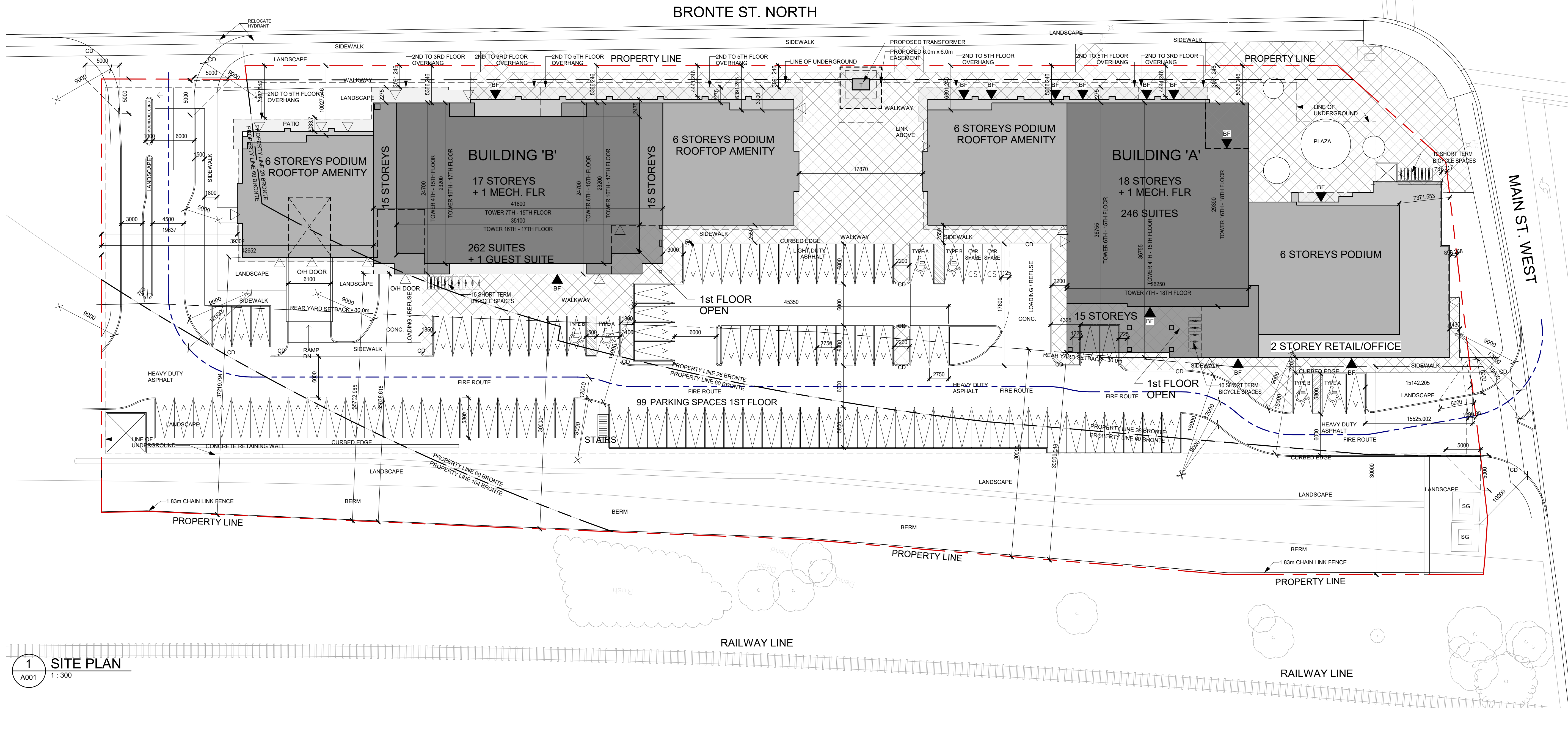
KNYMH INC.  
1006 SKYVIEW DRIVE • SUITE 101  
BURLINGTON, ONTARIO • L7P 0V1  
T 905.639.6595  
F 905.639.0394  
www.knymh.com info@knymh.com

THIS DOCUMENT IS INCOMPLETE AND MAY BE USED FOR REGULATORY APPROVAL PURPOSES ONLY. CONSTRUCTION SHALL BE FOR USE BY CONTRACTORS, SUBCONTRACTORS, OWNER AND CONTRACTORS TO PROVIDE INPUT TO THE DETERMINATION OF THIS DOCUMENT.

**PROJECT NORTH**  
TRUE NORTH

**BRONTE AND MAIN**  
28, 60 & 104 BRONTE STREET NORTH  
MILTON, ONTARIO

DRAWING SHEET TITLE: <b>SITE PLAN</b>	
DRAWING SCALE: As indicated	PROJECT NUMBER: <b>16079</b>
DRAWN BY: TB	CHECKED BY: Checker
DRAWING VERSION: PLOT DATE: July 21, 2020	DRAWING SHEET NUMBER: <b>A001</b>



**1 SITE PLAN**  
A001 1:300

**NOT FOR CONSTRUCTION**