

BLOCK 6	
UNIT TYPE	UNIT TOTAL
REAR LANE TOWNHOUSE	103
BACK TO BACK TOWNHOUSE	72
TOTAL	175

BLOCK 7	
UNIT TYPE	UNIT TOTAL
REAR LANE TOWNHOUSE	59
BACK TO BACK TOWNHOUSE	50
TOTAL	109

BLOCK 8	
UNIT TYPE	UNIT TOTAL
6-STOREY APARTMENT	106
REAR LANE TOWNHOUSE	42
BACK TO BACK TOWNHOUSE	34
TOTAL	182

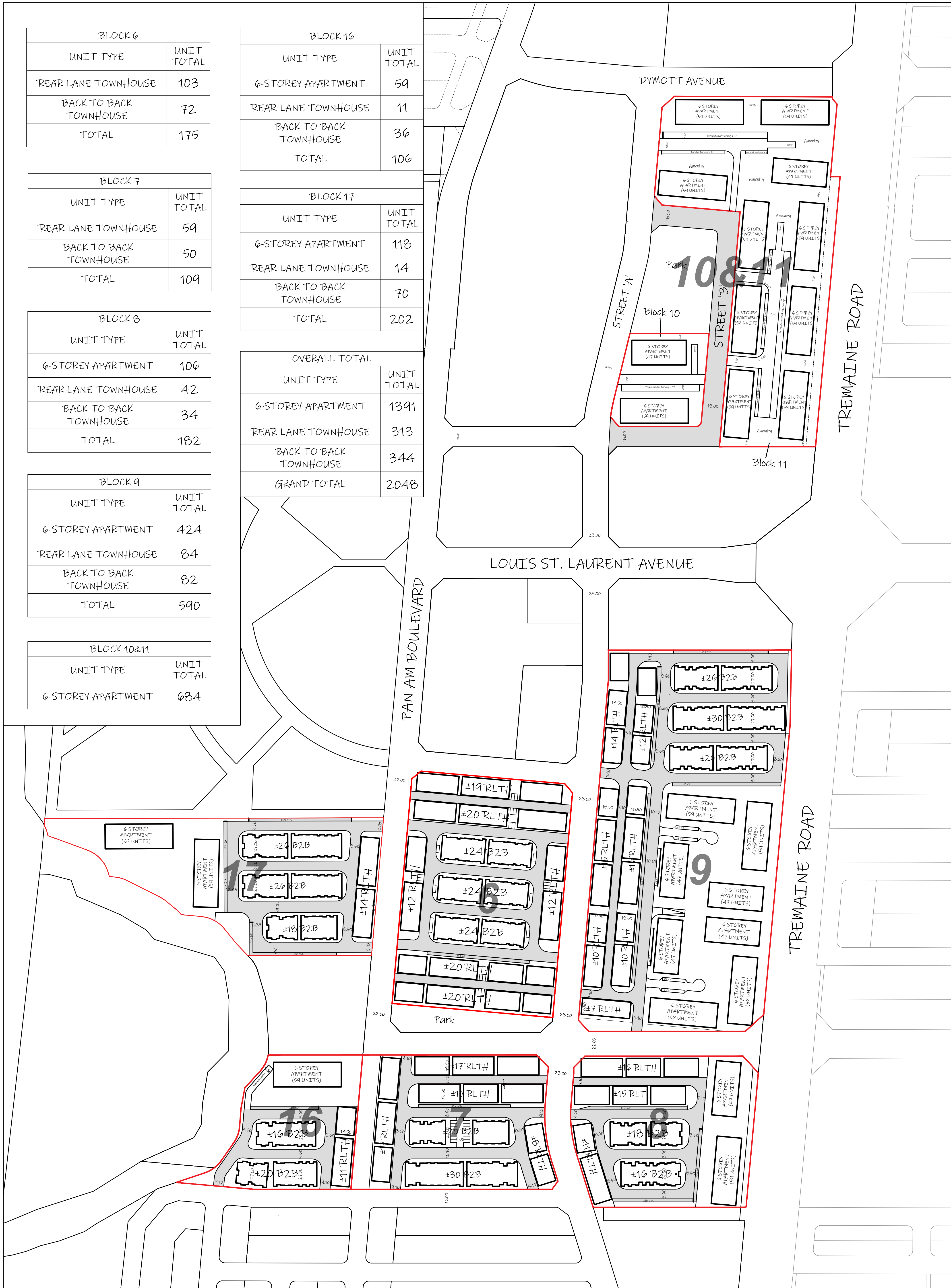
BLOCK 9	
UNIT TYPE	UNIT TOTAL
6-STOREY APARTMENT	424
REAR LANE TOWNHOUSE	84
BACK TO BACK TOWNHOUSE	82
TOTAL	590

BLOCK 10&11	
UNIT TYPE	UNIT TOTAL
6-STOREY APARTMENT	684

BLOCK 16	
UNIT TYPE	UNIT TOTAL
6-STOREY APARTMENT	59
REAR LANE TOWNHOUSE	11
BACK TO BACK TOWNHOUSE	36
TOTAL	106

BLOCK 17	
UNIT TYPE	UNIT TOTAL
6-STOREY APARTMENT	118
REAR LANE TOWNHOUSE	14
BACK TO BACK TOWNHOUSE	70
TOTAL	202

OVERALL TOTAL	
UNIT TYPE	UNIT TOTAL
6-STOREY APARTMENT	1391
REAR LANE TOWNHOUSE	313
BACK TO BACK TOWNHOUSE	344
GRAND TOTAL	2048



# MILTON EDUCATION VILLAGE

## SKETCH

PART OF LOTS 7, 8 & 9  
CONCESSION 7, N.S.

FOR DEMONSTRATIVE PURPOSES ONLY



September 26, 2025 SCALE 1:1500

