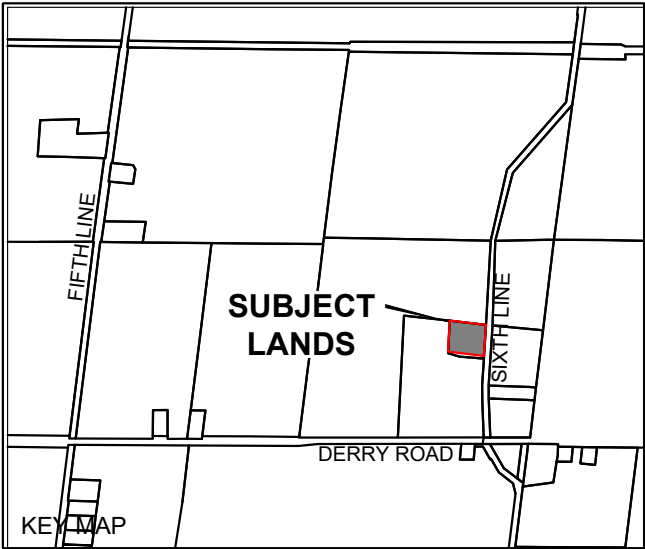
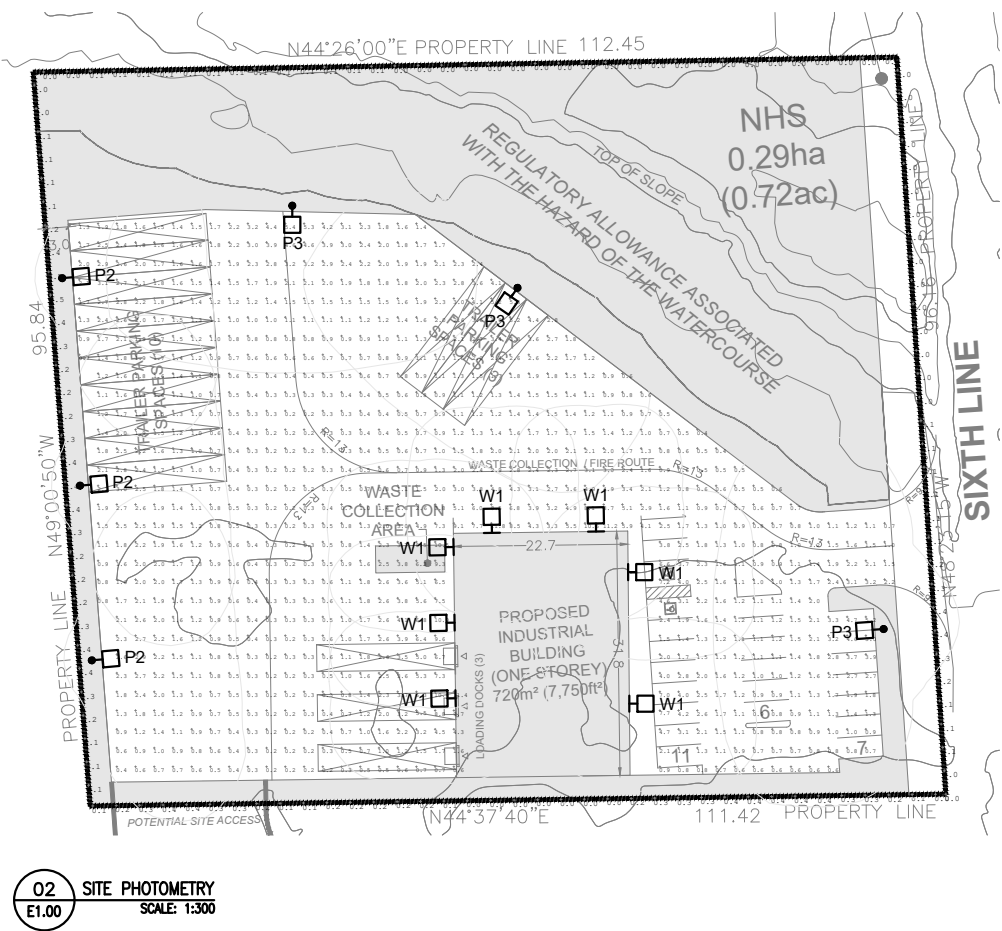


SITE LIGHTING LUMINAIRE SCHEDULE						
TYPE	LAMPS	MOUNTING	INPUT WATT	VOLTAGE	DESCRIPTION	PICTURE
P2	9167 Lm	POLE MOUNTED Ø 28'-00"	115W	-	TYPE: ALK-L LED AREA LIGHT MANUFACTURER: STANDARD PRODUCTS INC. SUPPLIER: STANDARD PRODUCTS INC. CONTACT: VINOD HUKERIKAR - (416) 878-1960 CATALOG #: ALK-LS4C4-XX-30K-69422	
P3	17418 Lm	POLE MOUNTED Ø 28'-00"	115W	-	TYPE: ALK-L LED AREA LIGHT MANUFACTURER: STANDARD PRODUCTS INC. SUPPLIER: STANDARD PRODUCTS INC. CONTACT: VINOD HUKERIKAR - (416) 878-1960 CATALOG #: ALK-LS4C4-XX-30K	
W1	12922 Lm	POLE MOUNTED Ø 28'-00"	100W	-	TYPE: LED FULL CUT OFF WALL PACK MANUFACTURER: STANDARD PRODUCTS INC. SUPPLIER: STANDARD PRODUCTS INC. CONTACT: VINOD HUKERIKAR - (416) 878-1960 CATALOG #: WFC-PS100A4-Q-3C-100W-30K	
NOTES: POLE MOUNTED FIXTURES SHALL BE MOUNTED AS PER THE MOUNTING HEIGHT MENTIONED,						

PHOTOMETRIC CALCULATION SUMMARY							
LABEL	CALCULATION TYPE	UNITS	AVERAGE	MAXIMUM	MINIMUM	AVG/MIN	MAX/MIN
PROPERTY LINE	ILLUMINANCE	Fc	0.14	0.50	0.00	N.A	N.A
SITE	ILLUMINANCE	Fc	1.78	11.80	0.20	8.90	59.00
CAR PARKING	ILLUMINANCE	Fc	1.94	7.70	0.60	3.23	12.83
DOCK	ILLUMINANCE	Fc	2.63	11.40	0.20	13.15	57.00
TRAILER PARKING	ILLUMINANCE	Fc	1.87	5.30	0.60	3.12	8.83



DEVELOPMENT CONCEPT PLAN

7072 SIXTH LINE

PART LOT 11, CONCESSION 6

TRAFALGAR, NEW SURVEY

PART 1 ON 20R11806

TOWN OF MILTON

REGION OF HALTON

ISSUE DATE (Y-M-D)	No.	ISSUED FOR
2025/03/24	01	ISSUED FOR SPA SUBMISSION

DRAWING TITLE: SITE PHOTOMETRY
PREPARED BY: DM
CHECKED BY: AB

PARKING CALCULATIONS

INDUSTRIAL* - 720m² (1/30m²): 24 SPACES
TOTAL SPACES PROVIDED: **24 SPACES**
*PARKING RATE AS PER TOWN OF MILTON M2 ZONE STANDARDS

TOTAL TRAILER SPACES PROVIDED: **13 SPACES**

TYPICAL PARKING SPACE: 2.75m x 5.80m
TYPICAL TYPE 'A' ACCESSIBLE SPACE: 3.40m x 5.80m
TYPICAL TYPE 'B' ACCESSIBLE SPACE: 2.75m x 5.80m
TYPICAL TRAILER SPACE: 3.50m x 18.00m

NOTES
-WITHIN CONSERVATION HALTON REGULATED AREA, GRAVEL AND FILL TO BE REMOVED AND GRADES TO BE RESTORED TO PRE-DISTURBANCE CONDITIONS



SCALE 1:300
MARCH 24, 2025



STAMP

spline
Mechanical & Electrical Engineers
#15 - 7015 Transmere Drive, Mississauga, Ontario L5S 1T7
905.407.8388 | info@splinegroup.ca | www.splinegroup.ca