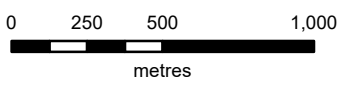


# TOWN OF MILTON OFFICIAL PLAN

## Schedule C.13.A BRITANNIA SECONDARY PLAN COMMUNITY STRUCTURE PLAN

- SECONDARY PLAN AREA
- MUNICIPAL BOUNDARY
- GREENBELT PLAN  
PROTECTED COUNTRYSIDE AREA
- NATURAL HERITAGE SYSTEM  
(SUBJECT TO REFINEMENT)
- GREENSPACE
- OMAGH
- FUTURE COMMUNITY AREA  
DESIGNATION - BRITANNIA  
(REFER TO POLICY C.X.7.7)
- NEIGHBOURHOOD
- URBAN VILLAGE CENTRE
- NEIGHBOURHOOD NODE

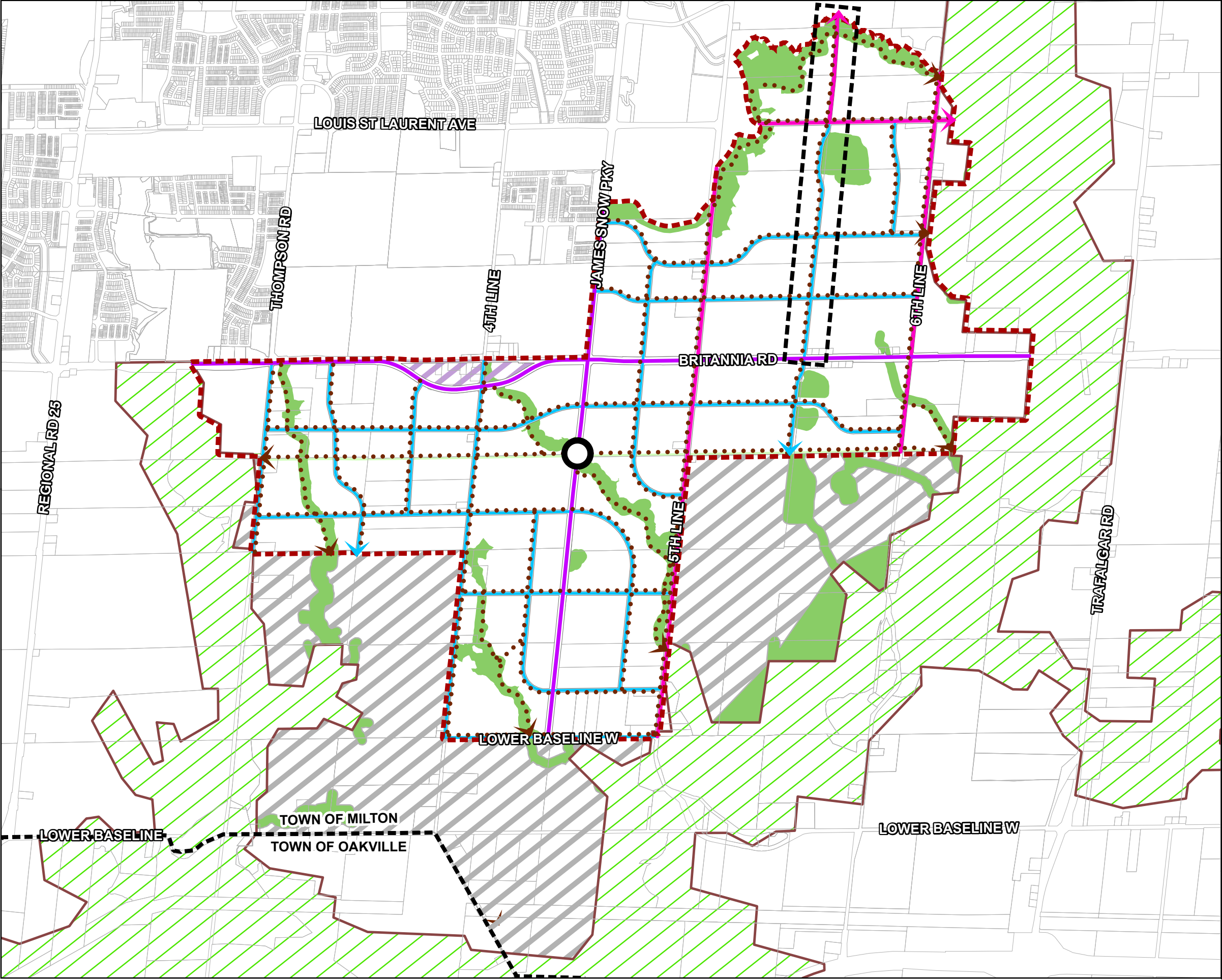


NAD 1983 - UTM Zone 17N

This Schedule Forms Part Of The Official Plan  
And Should Be Read Together With The Text.

Copyright 2025: Town of Milton, Teranet inc.

Last updated January 2025  
Office Consolidation December 2025



# TOWN OF MILTON OFFICIAL PLAN

Schedule C.13.B

## BRITANNIA SECONDARY PLAN ACTIVE TRANSPORTATION & NATURAL HERITAGE SYSTEM PLAN

- SECONDARY PLAN AREA
- MUNICIPAL BOUNDARY
- GREENBELT PLAN  
PROTECTED COUNTRYSIDE AREA
- NATURAL HERITAGE SYSTEM  
(SUBJECT TO REFINEMENT)
- GREENSPACE
- OMAGH
- FUTURE COMMUNITY AREA  
DESIGNATION - BRITANNIA  
(REFER TO POLICY C.X.7.7)
- ACTIVE TRANSPORTATION ROUTE  
(TRAIL NETWORK)
- ACTIVE TRANSPORTATION  
KEY ACCESS POINT
- ROAD NETWORK**
  - MAJOR ARTERIAL ROAD  
(WITH FACILITIES FOR PEDESTRIANS AND CYCLISTS)
  - POTENTIAL MAJOR ARTERIAL ROAD
  - MINOR ARTERIAL ROAD  
(WITH FACILITIES FOR PEDESTRIANS AND CYCLISTS)
  - COLLECTOR ROAD  
(WITH FACILITIES FOR PEDESTRIANS AND CYCLISTS)



0 250 500 1,000  
metres

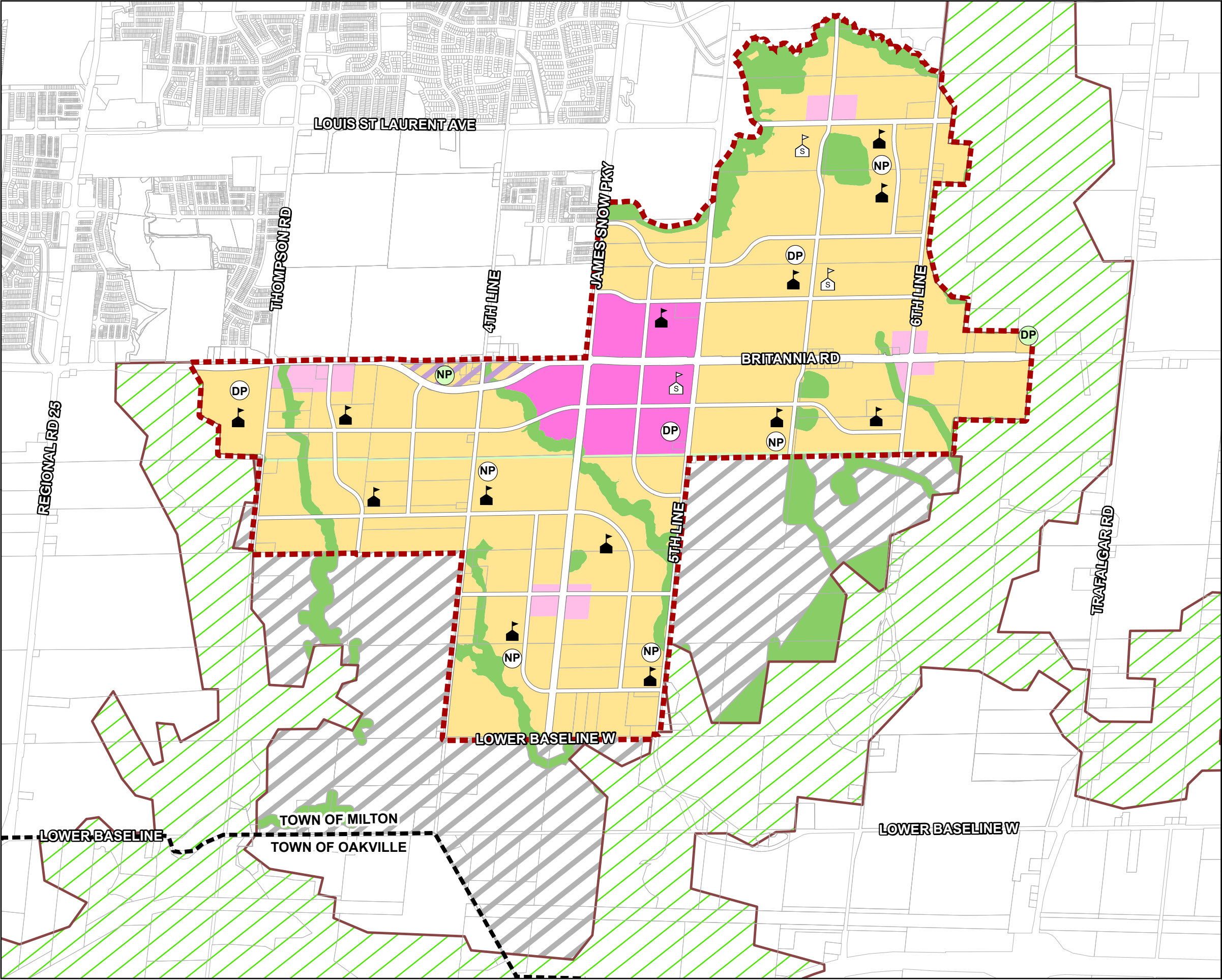
NAD 1983 - UTM Zone 17N

This Schedule Forms Part Of The Official Plan  
And Should Be Read Together With The Text.

Copyright 2025: Town of Milton, Teranet inc.

Last updated January 2025  
Office Consolidation December 2025





# TOWN OF MILTON

## OFFICIAL PLAN

### Schedule C.13.C

### BRITANNIA SECONDARY PLAN

### LAND USE PLAN



SECONDARY PLAN AREA  
MUNICIPAL BOUNDARY  
GREENBELT PLAN  
PROTECTED COUNTRYSIDE AREA



EVOLVING NEIGHBOURHOOD  
NEIGHBOURHOOD COMMERCIAL  
MIXED USE  
URBAN VILLAGE CENTRE  
OMAGH  
NATURAL HERITAGE SYSTEM  
(SUBJECT TO REFINEMENT)  
GREENSPACE  
FUTURE COMMUNITY AREA  
DESIGNATION - BRITANNIA  
(REFER TO POLICY C.X.7.7)



EXISTING DISTRICT PARK  
DISTRICT PARK  
EXISTING NEIGHBOURHOOD PARK  
NEIGHBOURHOOD PARK  
ELEMENTARY SCHOOL  
SECONDARY SCHOOL



02505001,000

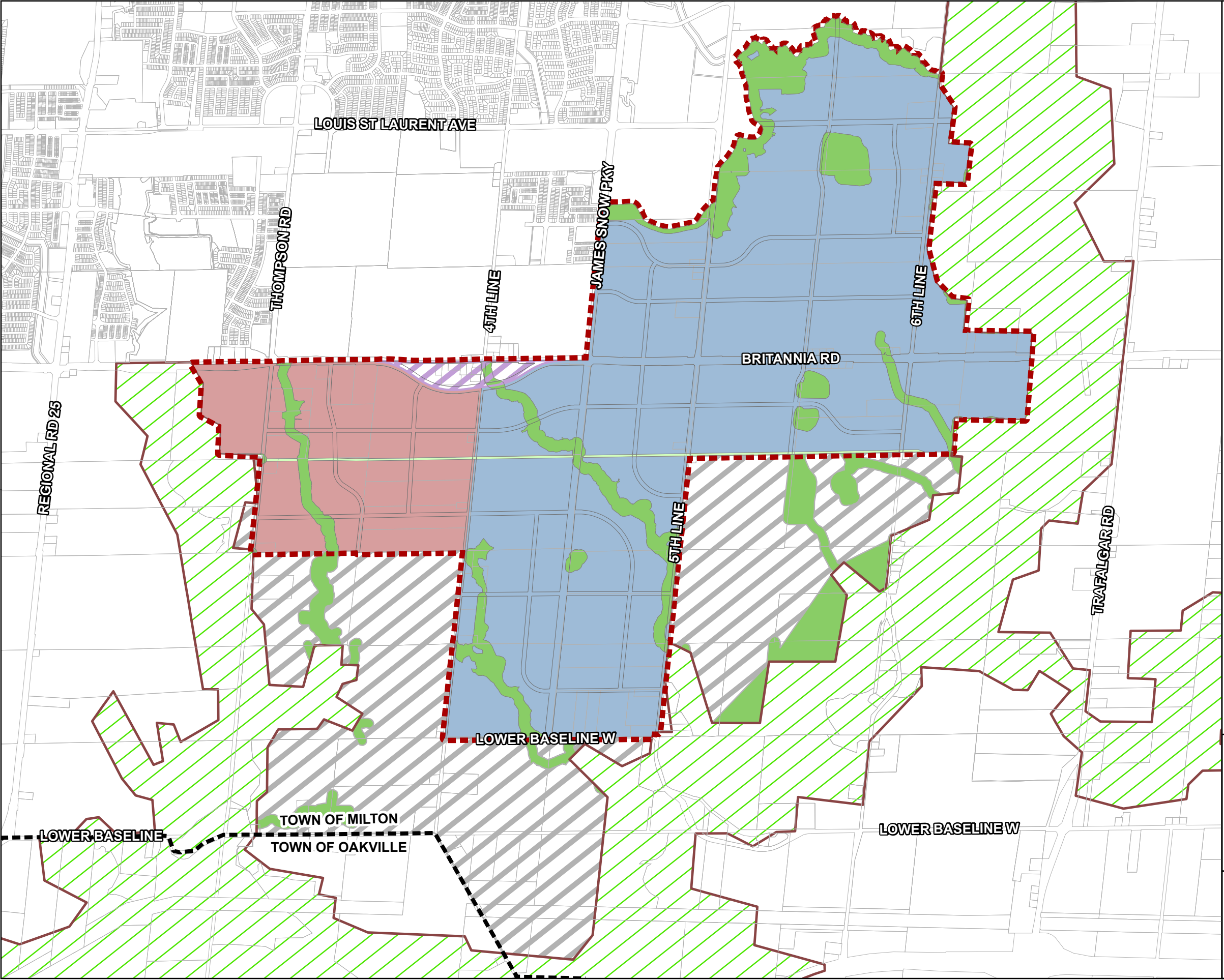
metres

NAD 1983 - UTM Zone 17N

This Schedule Forms Part Of The Official Plan  
And Should Be Read Together With The Text.

Copyright 2025: Town of Milton, Teranet inc.

Last updated January 2025  
Office Consolidation December 2025



# TOWN OF MILTON OFFICIAL PLAN

Schedule C.13.D

## BRITANNIA SECONDARY PLAN PHASING PLAN

- SECONDARY PLAN AREA
- MUNICIPAL BOUNDARY
- GREENBELT PLAN  
PROTECTED COUNTRYSIDE AREA
- NATURAL HERITAGE SYSTEM  
(SUBJECT TO REFINEMENT)
- GREENSPACE
- OMAGH
- FUTURE COMMUNITY AREA  
DESIGNATION - BRITANNIA  
(REFER TO POLICY C.X.7.7)

### PHASES

- PHASE 1
- PHASE 2



0 250 500 1,000  
metres

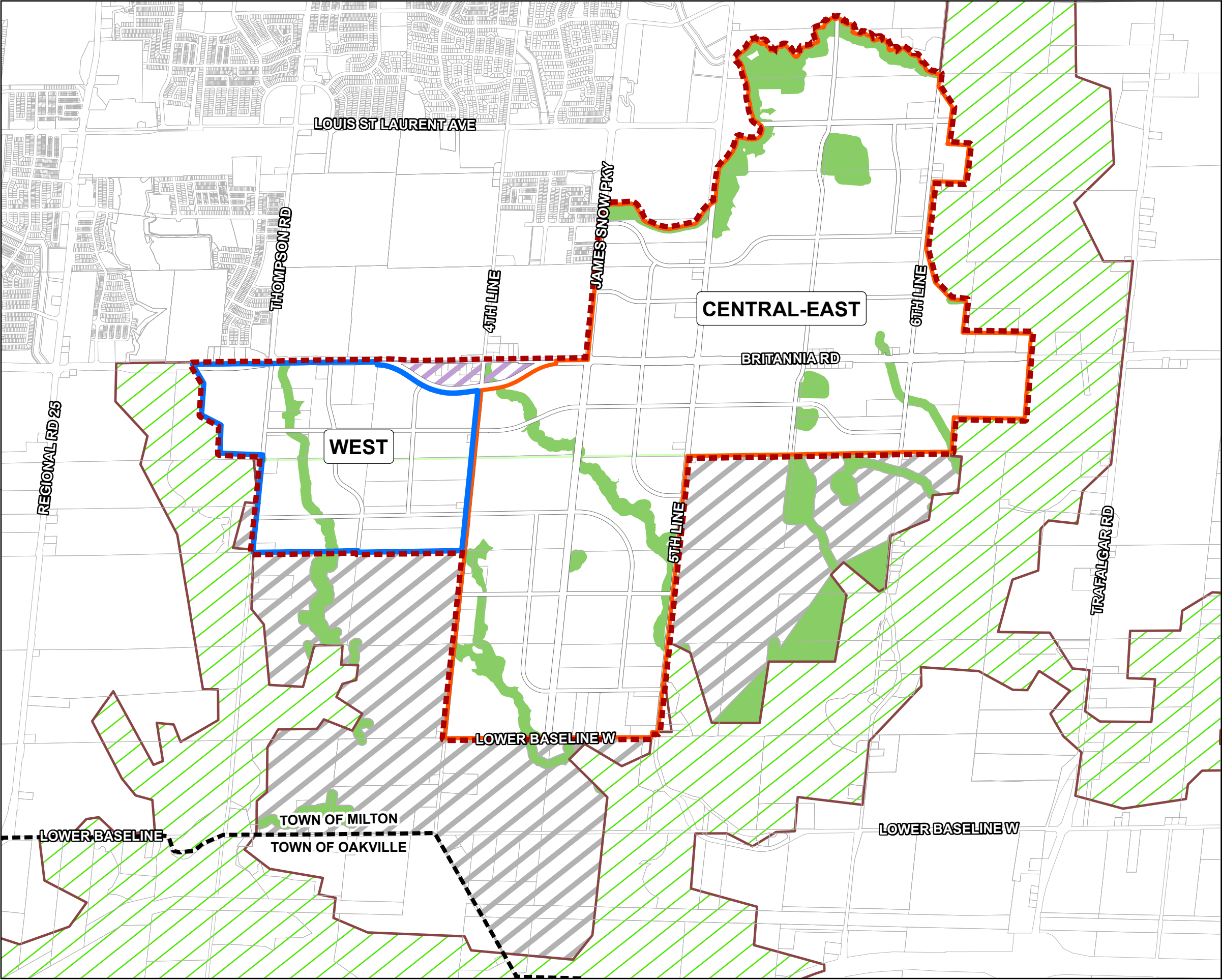
NAD 1983 - UTM Zone 17N

This Schedule Forms Part Of The Official Plan  
And Should Be Read Together With The Text.

Copyright 2025: Town of Milton, Teranet inc.

Last updated January 2025  
Office Consolidation December 2025







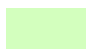




**TOWN OF MILTON  
OFFICIAL PLAN**



**Schedule C.13.E**

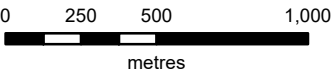
**BRITANNIA SECONDARY PLAN**

**TERTIARY PLAN AREAS**

-  SECONDARY PLAN AREA
-  MUNICIPAL BOUNDARY
-  GREENBELT PLAN  
PROTECTED COUNTRYSIDE AREA
-  NATURAL HERITAGE SYSTEM  
(SUBJECT TO REFINEMENT)
-  GREENSPACE
-  OMAGH
-  FUTURE COMMUNITY AREA  
DESIGNATION - BRITANNIA  
(REFER TO POLICY C.X.7.7)

**TERTIARY PLAN AREAS**

-  WEST TERTIARY PLAN
-  CENTRAL-EAST TERTIARY PLAN



NAD 1983 - UTM Zone 17N

This Schedule Forms Part Of The Official Plan  
And Should Be Read Together With The Text.

Copyright 2025: Town of Milton, Teranet inc.

Last updated January 2025  
Office Consolidation September 2025