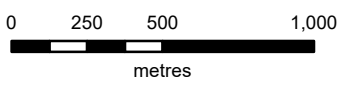


TOWN OF MILTON OFFICIAL PLAN

Schedule C.13.A BRITANNIA SECONDARY PLAN COMMUNITY STRUCTURE PLAN

- SECONDARY PLAN AREA
- MUNICIPAL BOUNDARY
- GREENBELT PLAN
PROTECTED COUNTRYSIDE AREA
- NATURAL HERITAGE SYSTEM
(SUBJECT TO REFINEMENT)
- GREENSPACE
- OMAGH
- FUTURE COMMUNITY AREA
DESIGNATION - BRITANNIA
(REFER TO POLICY C.X.7.7)
- NEIGHBOURHOOD
- URBAN VILLAGE CENTRE
- NEIGHBOURHOOD NODE

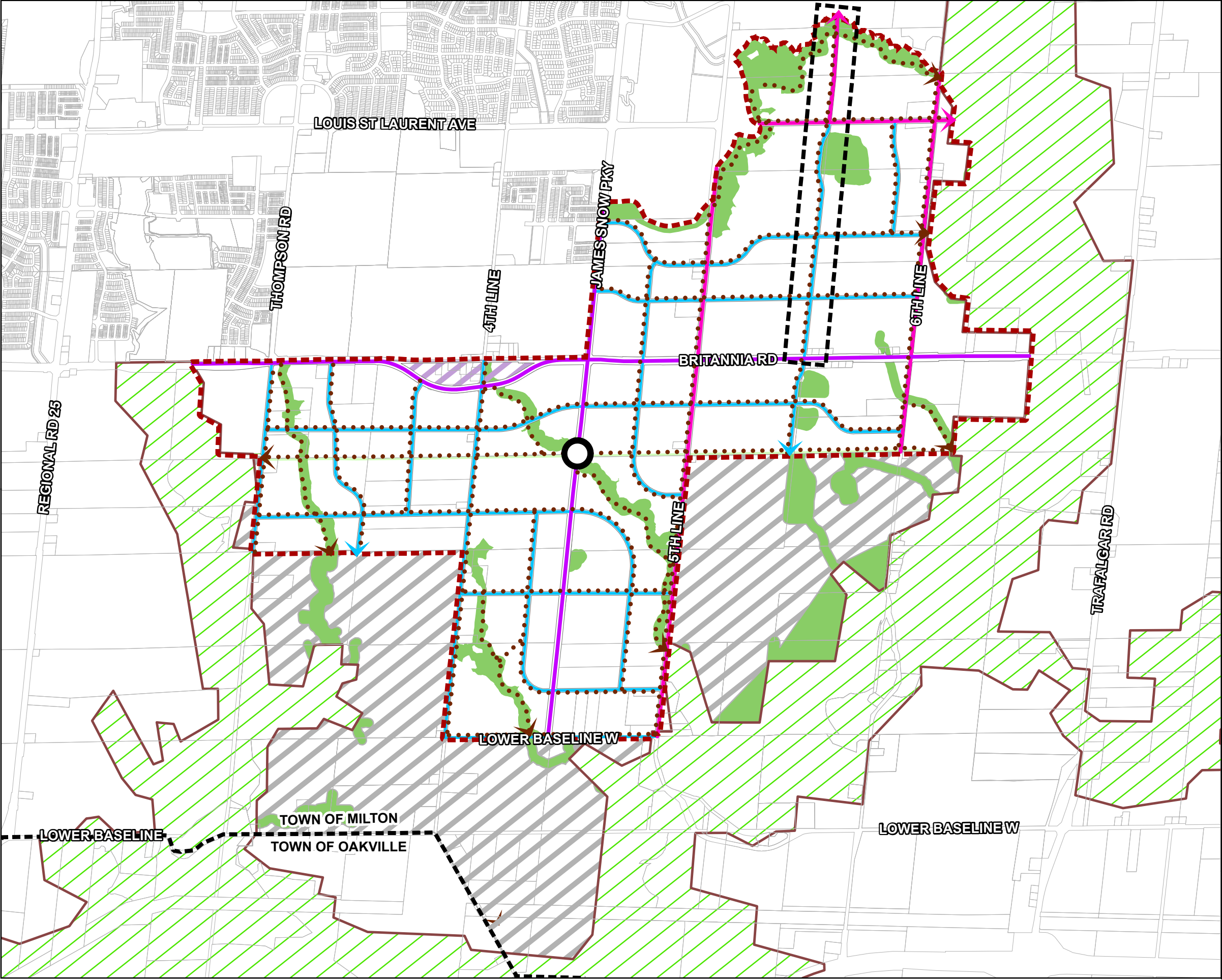


NAD 1983 - UTM Zone 17N

This Schedule Forms Part Of The Official Plan
And Should Be Read Together With The Text.

Copyright 2025: Town of Milton, Teranet inc.

Last Updated January 2025
Office Consolidation February 2026



TOWN OF MILTON OFFICIAL PLAN

Schedule C.13.B

BRITANNIA SECONDARY PLAN ACTIVE TRANSPORTATION & NATURAL HERITAGE SYSTEM PLAN

- SECONDARY PLAN AREA
- MUNICIPAL BOUNDARY
- GREENBELT PLAN
PROTECTED COUNTRYSIDE AREA
- NATURAL HERITAGE SYSTEM
(SUBJECT TO REFINEMENT)
- GREENSPACE
- OMAGH
- FUTURE COMMUNITY AREA
DESIGNATION - BRITANNIA
(REFER TO POLICY C.X.7.7)
- ACTIVE TRANSPORTATION ROUTE
(TRAIL NETWORK)
- ACTIVE TRANSPORTATION
KEY ACCESS POINT
- ROAD NETWORK**
 - MAJOR ARTERIAL ROAD
(WITH FACILITIES FOR PEDESTRIANS AND CYCLISTS)
 - POTENTIAL MAJOR ARTERIAL ROAD
 - MINOR ARTERIAL ROAD
(WITH FACILITIES FOR PEDESTRIANS AND CYCLISTS)
 - COLLECTOR ROAD
(WITH FACILITIES FOR PEDESTRIANS AND CYCLISTS)



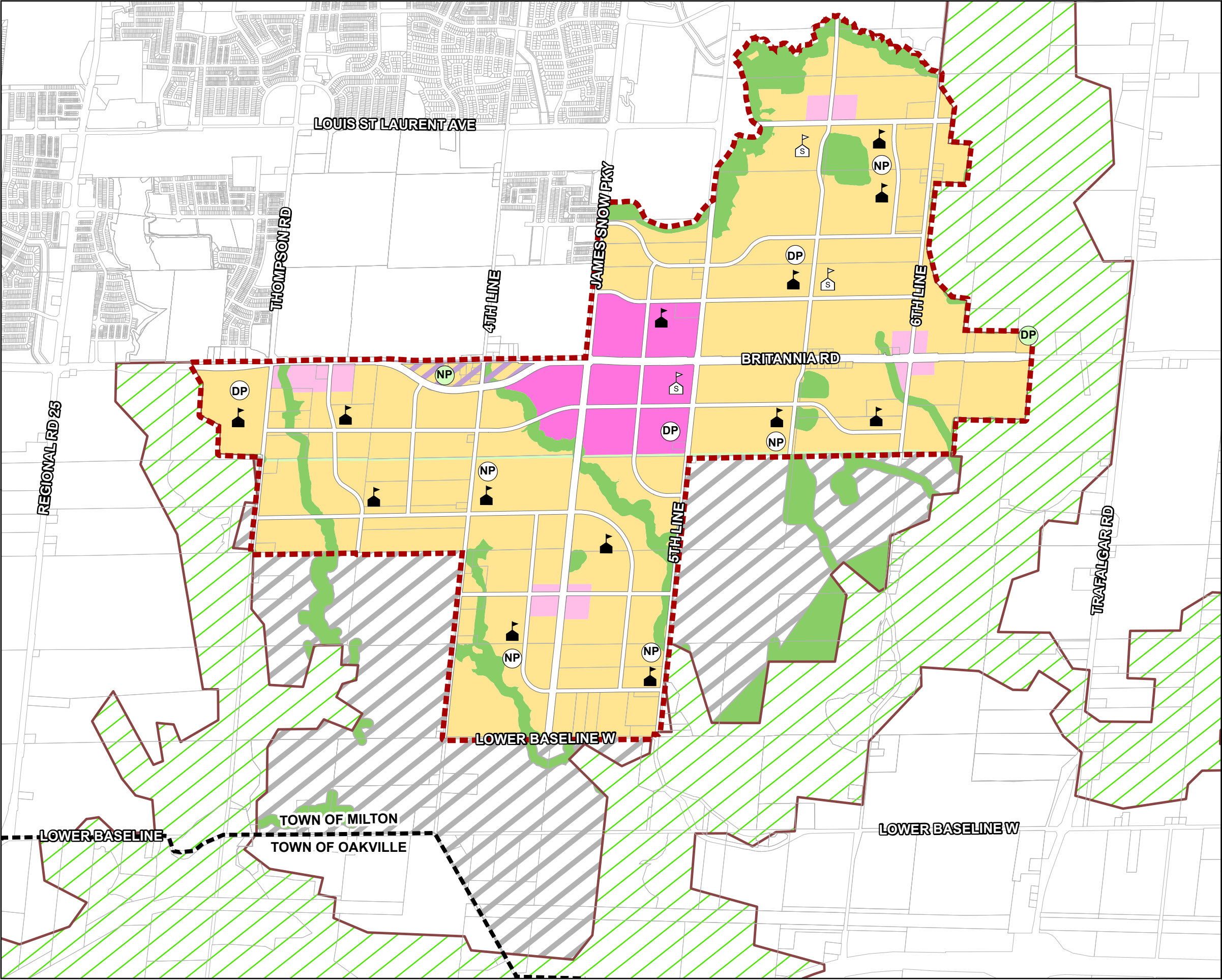
0 250 500 1,000
metres

NAD 1983 - UTM Zone 17N

This Schedule Forms Part Of The Official Plan
And Should Be Read Together With The Text.

Copyright 2025: Town of Milton, Teranet inc.

Last Updated January 2025
Office Consolidation February 2026



TOWN OF MILTON OFFICIAL PLAN

Schedule C.13.C

BRITANNIA SECONDARY PLAN

LAND USE PLAN

- SECONDARY PLAN AREA
- MUNICIPAL BOUNDARY
- GREENBELT PLAN
PROTECTED COUNTRYSIDE AREA
- EVOLVING NEIGHBOURHOOD
- NEIGHBOURHOOD COMMERCIAL
MIXED USE
- URBAN VILLAGE CENTRE
- OMAGH
- NATURAL HERITAGE SYSTEM
(SUBJECT TO REFINEMENT)
- GREENSPACE
- FUTURE COMMUNITY AREA
DESIGNATION - BRITANNIA
(REFER TO POLICY C.X.7.7)
- EXISTING DISTRICT PARK
- DISTRICT PARK
- EXISTING NEIGHBOURHOOD PARK
- NEIGHBOURHOOD PARK
- ELEMENTARY SCHOOL
- SECONDARY SCHOOL



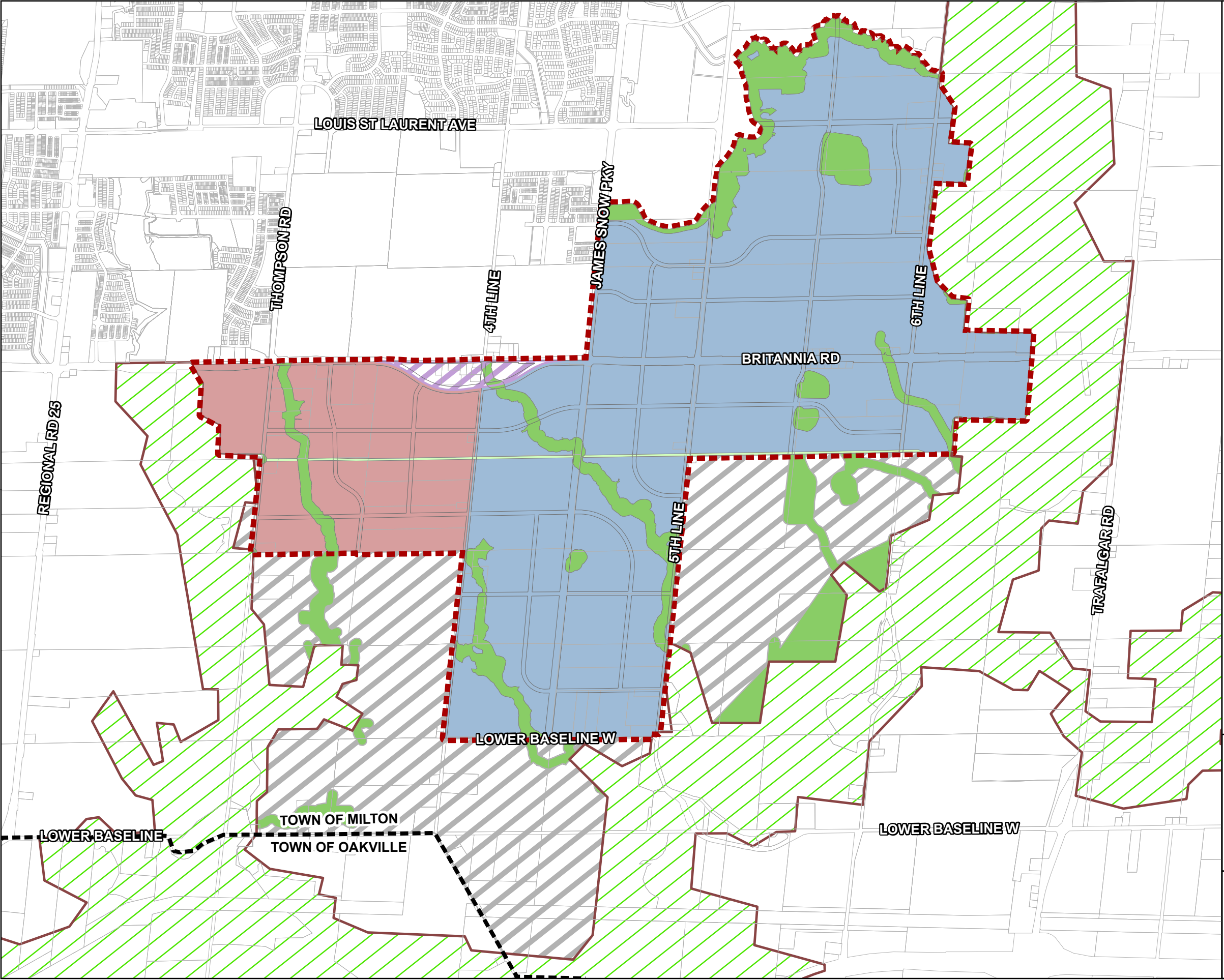
0 250 500 1,000
metres

NAD 1983 - UTM Zone 17N

This Schedule Forms Part Of The Official Plan
And Should Be Read Together With The Text.

Copyright 2025: Town of Milton, Teranet inc.

Last Updated January 2025
Office Consolidation February 2026



TOWN OF MILTON OFFICIAL PLAN

Schedule C.13.D

BRITANNIA SECONDARY PLAN PHASING PLAN

- SECONDARY PLAN AREA
- MUNICIPAL BOUNDARY
- GREENBELT PLAN
PROTECTED COUNTRYSIDE AREA
- NATURAL HERITAGE SYSTEM
(SUBJECT TO REFINEMENT)
- GREENSPACE
- OMAGH
- FUTURE COMMUNITY AREA
DESIGNATION - BRITANNIA
(REFER TO POLICY C.X.7.7)

PHASES

- PHASE 1
- PHASE 2



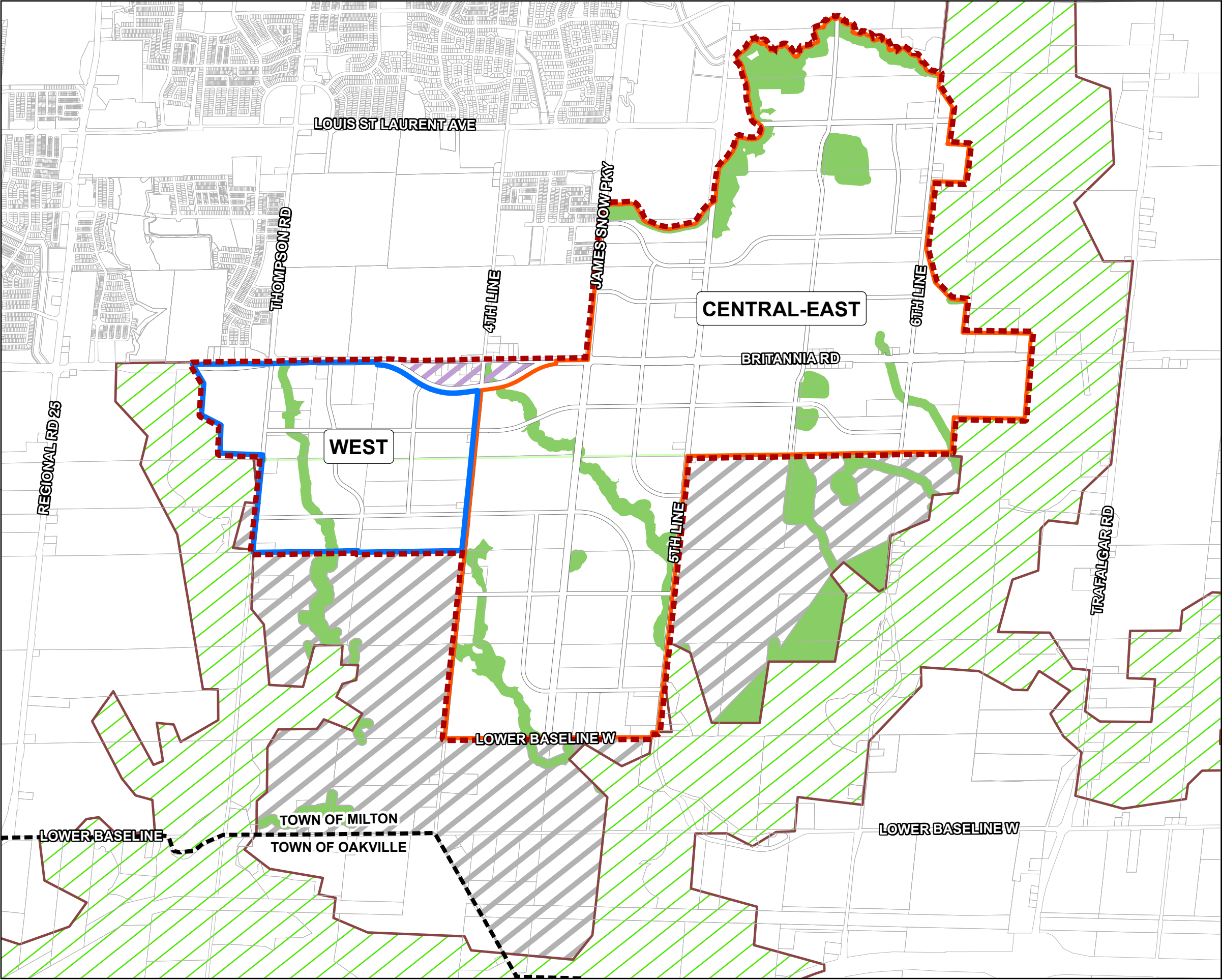
0 250 500 1,000
metres

NAD 1983 - UTM Zone 17N

This Schedule Forms Part Of The Official Plan
And Should Be Read Together With The Text.

Copyright 2025: Town of Milton, Teranet inc.

Last Updated January 2025
Office Consolidation February 2026





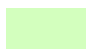




**TOWN OF MILTON
OFFICIAL PLAN**



Schedule C.13.E

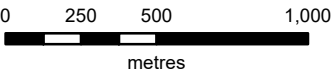
BRITANNIA SECONDARY PLAN

TERTIARY PLAN AREAS

-  SECONDARY PLAN AREA
-  MUNICIPAL BOUNDARY
-  GREENBELT PLAN
PROTECTED COUNTRYSIDE AREA
-  NATURAL HERITAGE SYSTEM
(SUBJECT TO REFINEMENT)
-  GREENSPACE
-  OMAGH
-  FUTURE COMMUNITY AREA
DESIGNATION - BRITANNIA
(REFER TO POLICY C.X.7.7)

TERTIARY PLAN AREAS

-  WEST TERTIARY PLAN
-  CENTRAL-EAST TERTIARY PLAN



NAD 1983 - UTM Zone 17N

This Schedule Forms Part Of The Official Plan
And Should Be Read Together With The Text.

Copyright 2025: Town of Milton, Teranet inc.

Last Updated January 2025
Office Consolidation February 2026