



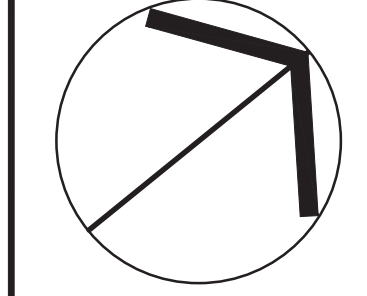
A2.1

PROJECT
**PINE STREET
 APARTMENT**
 70 PINE STREET
 MILTON
 ONTARIO

TITLE
FIRST FLOOR PLAN

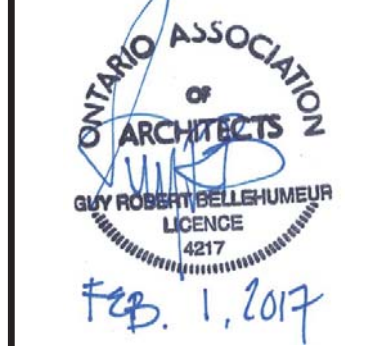
STATUS
 FOLDER 70 PINE
 FILE 70 PINE - PLANS.dwg
 SCALE 3/16"=1'-0"
 DWN BY KSR
 DATE JANUARY 2017
 REISED
 JOB No. 10985

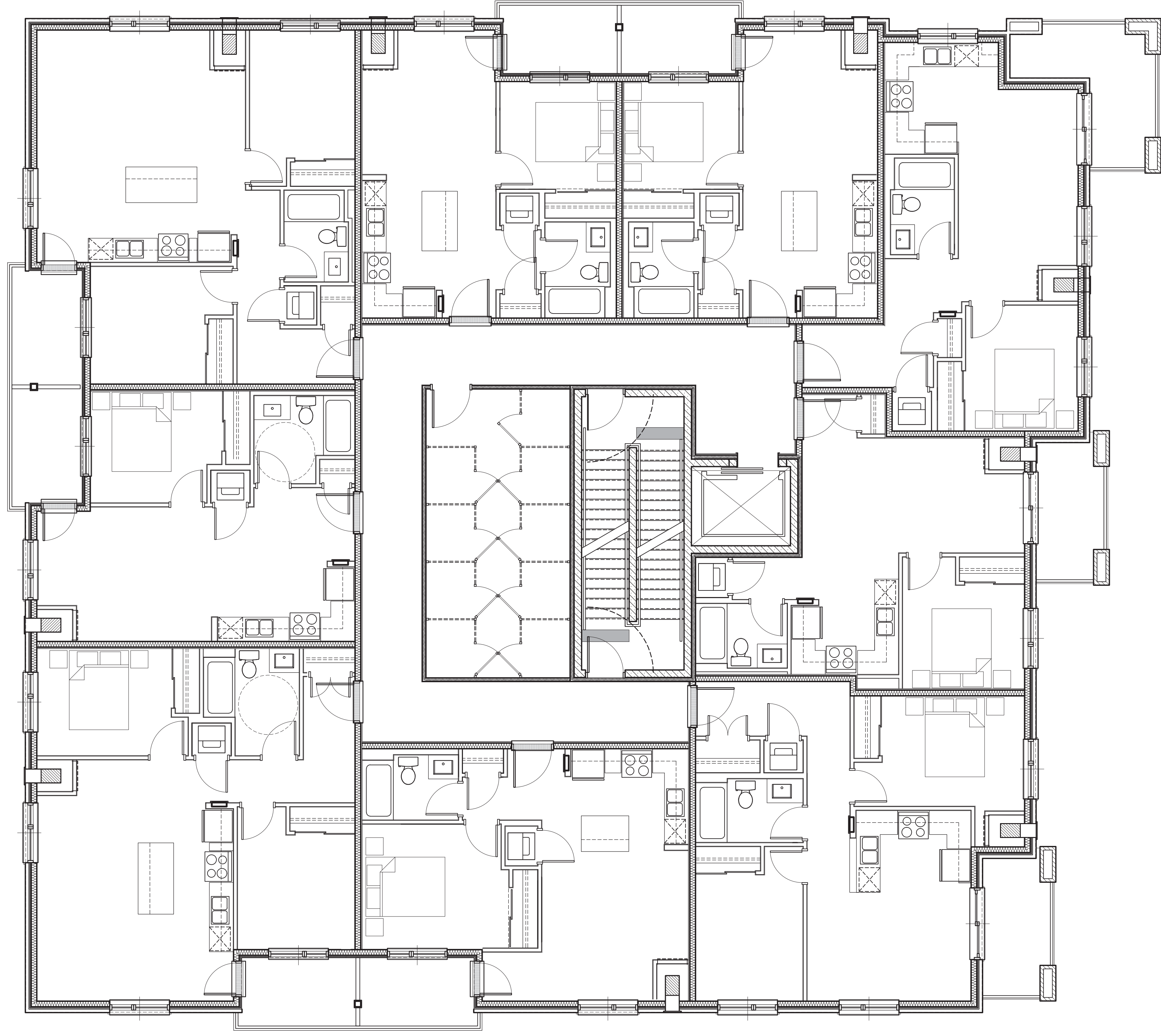
DATE	No.	REVISION
01/01/17	2	ISSUED FOR ZONING AMENDMENT
08/09/16	1	SPA PRECONSULT SUBMISSION



"Guy R. Bellemare, R. Arch. OAA, MRAC
 Principal Architect of GB ARCHITECT INC. is the
 designer for this project with respect to all architectural
 work identified on this drawing sheet. The Ontario
 Association of Architects has assigned
 Guy R. Bellemare, R. Arch. OAA, MRAC
 as the responsible architect for this project.
 Registration Number: 5247 (Municipal
 Act and Planning Bill 124)
 The Architect above has the responsible control with
 respect to design activities. The Architect's seal number is their
 B.C.D.N. number.

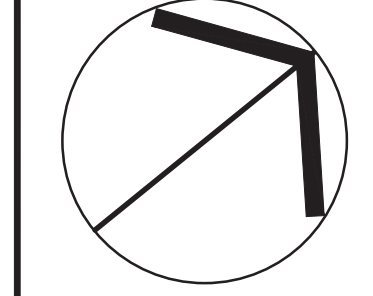
gb architect inc.
 430 ONTARIO STREET
 STRATFORD, ONTARIO, N5A 3J2
 PHONE (519) 272-0073 - FAX (519) 272-1433





STATUS	FOUNDER 70 PINE
FILE	70 PINE - PLANS.dwg
SCALE	3/16"=1'-0"
DWN BY	KSR
DATE	JANUARY 2017
REVISED	
JOB No.	10985

DATE	09/09/16	No.	1	REVISION	SPM PRECONSULT SUBMISSION
DATE	07/01/17	No.	2	ISSUED FOR ZONING AMENDMENT	



"Guy R. Belliveau, R. Arch. OAA, MRAC
 Principal Architect of GB ARCHITECT INC. is the
 designer for this project with respect to all architectural
 work identified on this drawing sheet. The Ontario
 Association of Architects has assigned
 Guy R. Belliveau as the responsible control with
 respect to design activities. The Architect's seat number is their
 BCDN number.

Registration Number: 5247
 430 ONTARIO STREET
 STRATFORD, ONTARIO, N5A 3J2
 PHONE (519) 272-0073 - FAX (519) 272-1433

gb architect inc.





EAST (ONTARIO STREET) ELEVATION

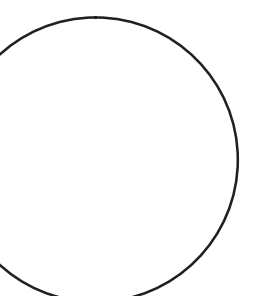


NORTH (PINE STREET) ELEVATION



gb architect inc.
 430 ONTARIO STREET
 STRATFORD, ONTARIO, N5A 3J7
 PHONE (519) 272-0073 FAX (519) 272-1433

*Guy R. Bellemare, B. Arch., O.A.A., MRAC
 Principal Architect of GB ARCHITECT INC. is the
 designer for this project with respect to all architectural
 work identified on this drawing sheet. The Ontario
 Association of Architects has assigned
 Guy R. Bellemare of GB ARCHITECT INC.
OCOR Number 5207
 as per requirements of the Ministry of Municipal
 Affairs & Housing Bill 124.
 The Architect above has exercised responsible control with
 respect to design and construction of the work shown on this
 B.C.D.N. number.



DATE	NO.	REVISION
02/02/16	1	SPA PRECONSULT SUBMISSION
01/31/17	2	ISSUED FOR ZONING AMENDMENT

STATUS	70 PINE - ELEVATIONS
FILE	70 PINE - ELEVATIONS
SCALE	3/16"=1'-0"
DWN BY	MW / ABM
DATE	JANUARY 2017
REVISED	
JOB No.	10965

PROJECT
 PINE STREET
 APARTMENT
 70 PINE STREET
 MILTON
 ONTARIO

TITLE
 EAST AND NORTH
 EXTERIOR ELEVATIONS

A3.1



WEST ELEVATION

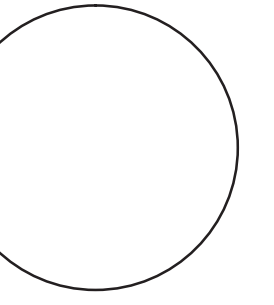


SOUTH ELEVATION



gb architect inc.
 430 ONTARIO STREET
 STRATFORD, ONTARIO, N5A 3J7
 PHONE (519) 272-0073 FAX (519) 272-1433

*Guy R. Robbinelle, B. Arch., O.A.A., MR.A.I.C.
 Principal Architect of GB ARCHITECT INC. is the
 designer for this project with respect to all architectural
 work identified on this drawing sheet. The Ontario
 Association of Architects has assigned
 Guy R. Robbinelle as the architect for this project.
BCON Number: 5207
 as per requirements of the Ministry of Municipal
 Affairs & Housing Bill 124.
 The Architect above has exercised responsible control with
 respect to design and construction of the work shown on this
 drawing sheet. B.C.O.N. number:



STATUS	DATE	NO.	REVISION
ISSUED FOR ZONING AMENDMENT	01/31/17	2	
SPR PRECONSULT SUBMISSION	02/02/16	1	

STATUS	FOLDER 70 PINE
FILE	70 PINE - ELEVATIONS.dwg
SCALE	3/16"=1'-0"
DWN BY	MHW / ABM
DATE	JANUARY 2017
REVISED	
JOB No.	10965

PROJECT
PINE STREET APARTMENT
 70 PINE STREET
 MILTON ONTARIO

TITLE
WEST AND SOUTH EXTERIOR ELEVATIONS

A3.2